



NT3 Power Tool Volume Profile

*Matt Brown
Founder, Head Trader*

*© 2015 SMARE Investment Group, LLC
All Rights Reserved*

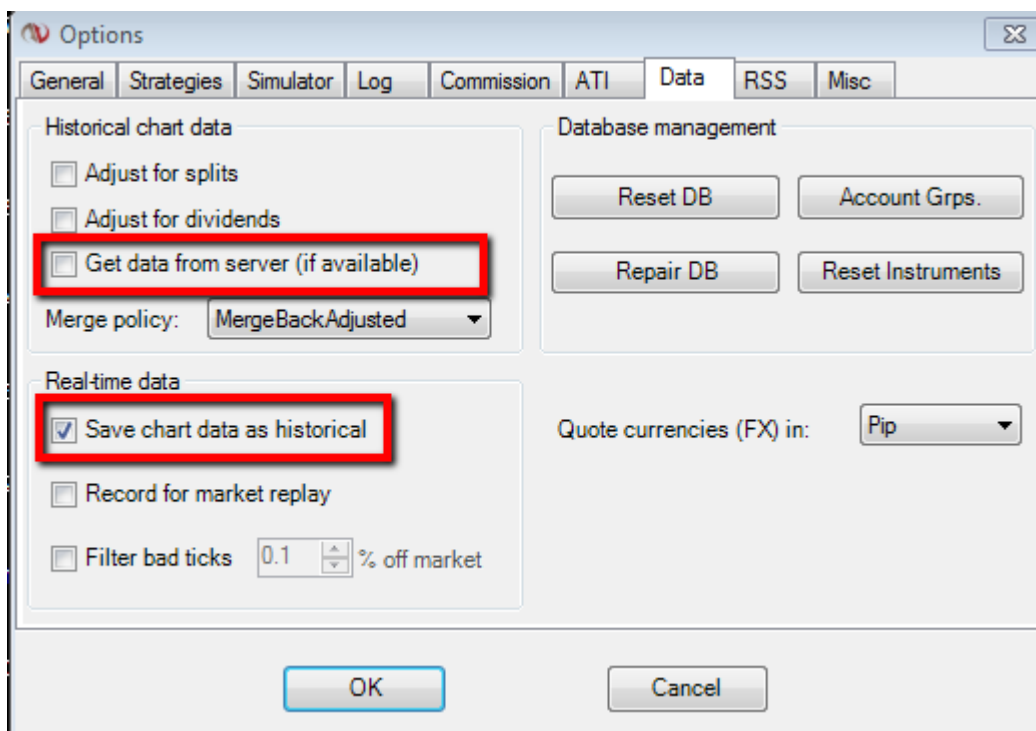
Risks of Security Futures Transactions

CFTC RULE 4.41 HYPOTHETICAL OR SIMULATED PERFORMANCE RESULTS HAVE CERTAIN LIMITATIONS. UNLIKE AN ACTUAL PERFORMANCE RECORD, SIMULATED RESULTS DO NOT REPRESENT ACTUAL TRADING. ALSO, SINCE THE TRADES HAVE NOT BEEN EXECUTED, THE RESULTS MAY HAVE UNDER-OR-OVER COMPENSATED FOR THE IMPACT, IF ANY, OF CERTAIN MARKET FACTORS, SUCH AS LACK OF LIQUIDITY. SIMULATED TRADING PROGRAMS IN GENERAL ARE ALSO SUBJECT TO THE FACT THAT THEY ARE DESIGNED WITH THE BENEFIT OF HINDSIGHT. NO REPRESENTATION IS BEING MADE THAT ANY ACCOUNT WILL OR IS LIKELY TO ACHIEVE PROFIT OR LOSSES SIMILAR TO THOSE SHOWN.

DISCLAIMER: Futures and options trading involves substantial risk of loss and is not suitable for every investor. The valuation of futures and options may fluctuate, and, as a result, clients may lose more than their original investment. The impact of seasonal and geopolitical events is already factored into market prices. The highly leveraged nature of futures trading means that small market movements will have a great impact on your trading account and this can work against you, leading to large losses or can work for you, leading to large gains. If the market moves against you, you may sustain a total loss greater than the amount you deposited into your account.

You are responsible for all the risks and financial resources you use and for the chosen trading system. You should not engage in trading unless you fully understand the nature of the transactions you are entering into and the extent of your exposure to loss. If you do not fully understand these risks you must seek independent advice from your financial adviser. All trading strategies are used at your own risk. This software should not be relied upon as advice or construed as providing recommendations of any kind. It is your responsibility to confirm and decide which trades to make. Trade only with risk capital; that is, trade with money that, if lost, will not adversely impact your lifestyle and your ability to meet your financial obligations.

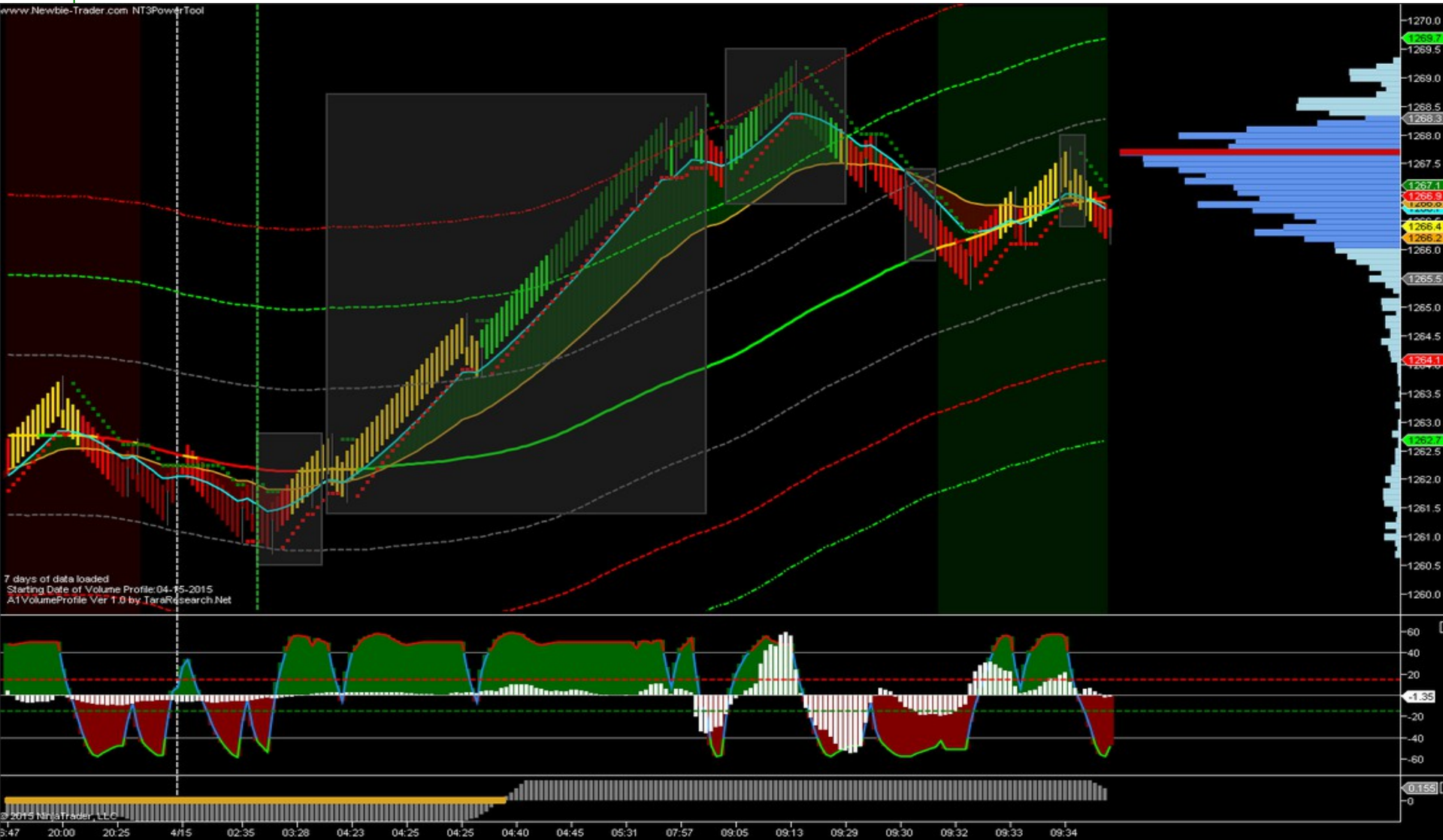
Internals / Historical Signals



Volume Profile

- Intra-Day up to 5 years
 - Display 2 time-frame volume profiles on the same chart
 - Display 2 or more time-frame LVN-HVNs on the same chart - change line patterns for each time-frame for easy viewing
 - Precision adjustment of the distribution of LVNs & HVNs
 - VPOC : Volume Point Of Control indicates the location that the highest volume of trades has occurred in the Volume Profile time-frame.
 - Value Area: Value Area show the location where 68% of the volume of trades has occurred around VPOC.


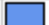



Volume Profile



Intra Day Settings

Colors	
Color of HVN LVN markers	DarkGray
Color of Value Area Bars	CornflowerBlue
Color of Volume Bars	Light Blue
HVN Line Color	192, 0, 0
LVN Line Color	0, 192, 0
Parameters	
Dock Volume Profile to Right or Left	Right
HLVN_DashStyle	Dash
HVN LVN Line Thickness	1
Length Of Volume Profile - up to 5	Today
Percentage of chart width for VP	20
Period1	5
Period2	100
Show HVN LVN lines	False
Show Price Markers	False
Show Value Area	True
Show Volume Profile	True
Show VP Timeframe with markers	False
Show VPOC	True
ShowAvgs	False
VPNotificationPosition	BottomLeft
WAdj	2
Data	
Calculate on bar close	True
Input series	ES 06-15 (400 Tick)
Maximum bars look back	TwoHundredFiftySix
Visual	
Auto scale	True
Displacement	0
Display in Data Box	False
Label	
Panel	Same as input series
Price marker(s)	True
Scale justification	Right

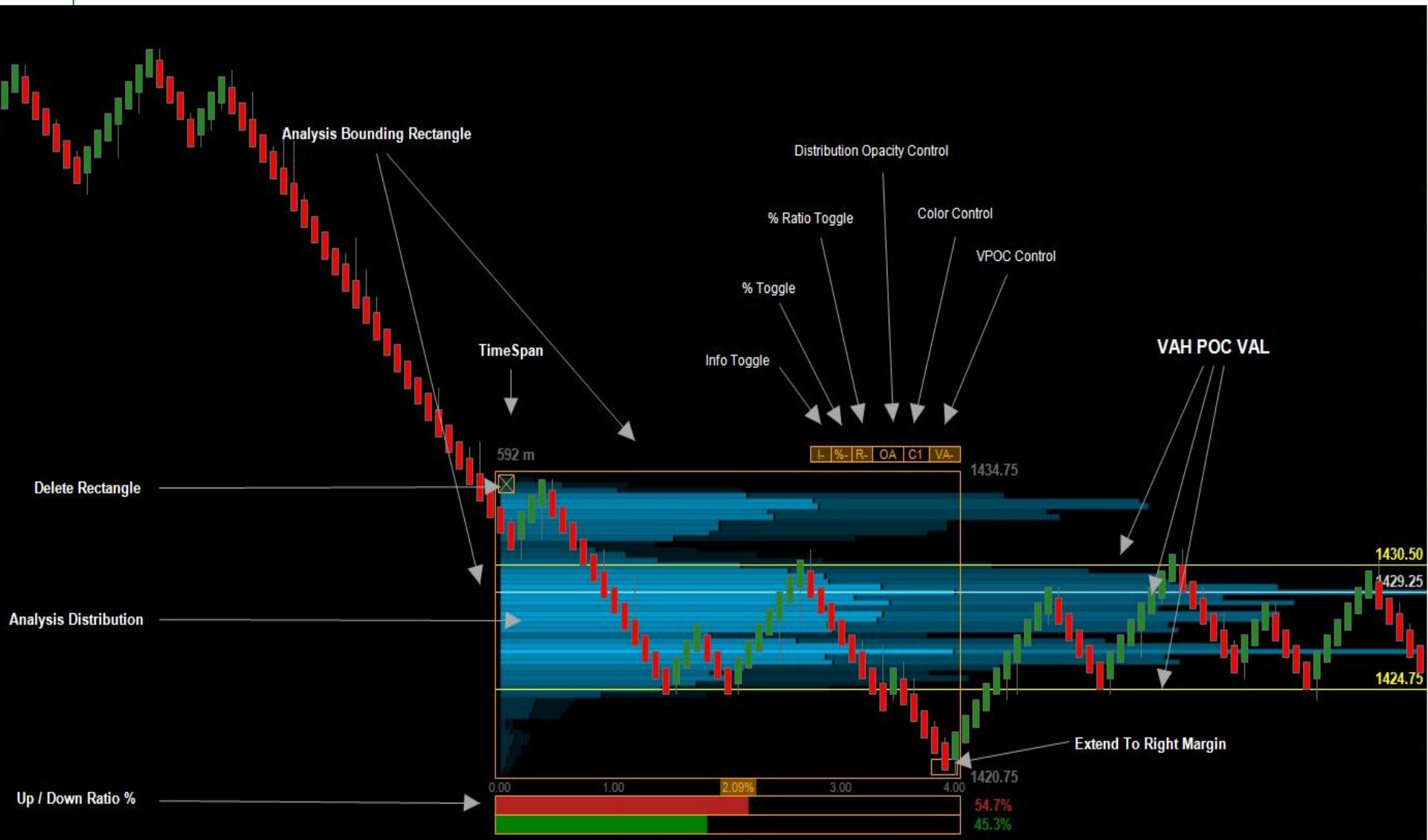
Multi Year Settings

Colors	
Color of HVN LVN markers	 DarkGray
Color of Value Area Bars	 CornflowerBlue
Color of Volume Bars	 LightBlue
HVN Line Color	 192, 0, 0
LVN Line Color	 0, 192, 0
Parameters	
Dock Volume Profile to Right or Left	Right
HLVN_DashStyle	Dash
HVN LVN Line Thickness	2
Length Of Volume Profile - up to 5 Years	5 Years
Percentage of chart width for VP	30
Period1	3
Period2	100
Show HVN LVN lines	True
Show Price Markers	False
Show Value Area	True
Show Volume Profile	True
Show VP Timeframe with markers	False
Show VPOC	True
ShowAvgs	False
VPNotificationPosition	BottomLeft
WAdj	10
Data	
Calculate on bar close	True
Input series	ES 06-15 (60 Min)
Maximum bars look back	TwoHundredFiftySix
Visual	
Auto scale	True
Displacement	0
Display in Data Box	False
Label	
Panel	Same as input series
Price marker(s)	True
Scale justification	Right

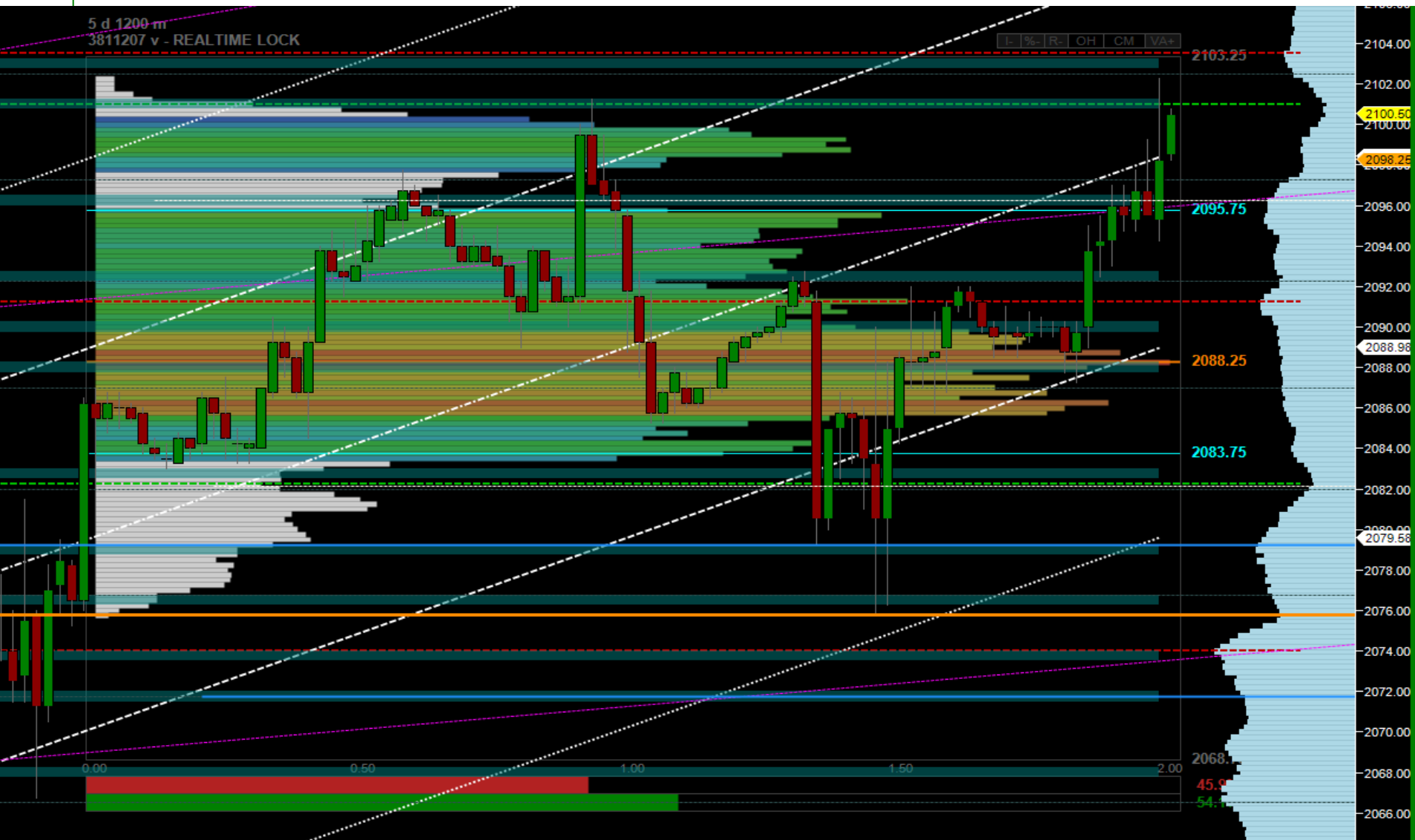
Volume Wand

- Volume, Tick, Price Distribution Range Profile Analysis Tool
 - VPOC
 - Volume Delta
 - Volume Footprint

Volume Wand



Volume Wand



Volume Wand Settings

Controls	
01. On-The-Fly Controls Enabled	True
02. Auto-Hide Enabled	False
03. Default Histogram Area Opacity	AUTO
04. Default Value Area / POC Mod	STANDARD
05. Default Color Mode	COLOR
06. Default Information Display Mode	DISPLAYED
07. Default Ratio Display Mode	DISPLAYED
08. Default Percentage Tracer Mode	DISPLAYED
09. Default Histogram Expansion Factor	STANDARD
10. Keyboard Shortcut Enabled	True
11. Remove Button Placement	UPPER_RIGHT
Parameters	
01. Secondary Data On	True
02. Histogram Data Source	VWTP0
03. Ticks Per Bin	1
04. Percent of Volume In Value Area	70
05. Weight Up/Down Bar Ratio	True
06. Current Bar Lock Width	True
07. Current Bar Lock Height	True
08. Single Wand Limit	False
09. Timespan Display Type	TIME
10. Censor CPU Warning	False

Visuals	
01. Outline Color	64, 64, 64
02. HighLight Color	Silver
03. Histogram Area Color	Gray
04. Histogram Area Color (Alternate)	DimGray
05. Text Color	DimGray
06. Text Font	Arial, 10pt, style=Bold
07a. Point of Control Line Color	255, 128, 0
07b. Point of Control Hist Color	255, 128, 0
07c. Point of Control Text Color	255, 128, 0
07d. Point of Control Line Width	2
07e. Point of Control Line Dash Style	Solid
08a. Value Area High Line Color	Cyan
08b. Value Area High Hist Color	Cyan
08c. Value Area High Text Color	Cyan
08d. Value Area Line High Width	1
08e. Value Area High Line Dash Style	Solid
09a. Value Area Low Line Color	Cyan
09b. Value Area Low Hist Color	Cyan
09c. Value Area Low Text Color	Cyan
09d. Value Area Low Line Width	1
09e. Value Area Low Line Dash Style	Solid
10a. Bar Ratio Up Color	Green
10b. Bar Ratio Down Color	Firebrick
Data	
Calculate on bar close	False
Input series	ES 06-15 (60 Min)
Maximum bars look back	TwoHundredFiftySix
Visual	
Auto scale	True
Displacement	0
Display in Data Box	False
Label	
Panel	Same as input series
Price marker(s)	True
Scale justification	Right

Discount Purchase Links

10% Off Volume Profile Indicator
[*Click Here To Purchase*](#)

10% Off Volume Wand Discount Link
[*Click Here To Purchase*](#)

Thank You

Questions