



[EminiJunkie.com](http://EminiJunkie.com)

**System Guide  
KIS System**

Build 0416

## **Risk Disclosure**

Trading security futures contracts may not be suitable for all investors. You may lose a substantial amount of money in a very short period of time. The amount you may lose is potentially unlimited and can exceed the amount you originally deposit with your broker. This is because futures trading is highly leveraged, with a relatively small amount of money used to establish a position in assets having a much greater value. If you are uncomfortable with this level of risk, you should not trade security futures contracts.

## **Disclaimer**

This Eminijunkie software product ("software") is provided to you "as is" without warranties or conditions of any kind, whether oral or written, express or implied. SMARE Investments LLC specifically disclaims any implied warranties or conditions of merchantability, satisfactory quality, non-infringement and fitness for a particular purpose. The system is provided for educational purposes only, for usage on a simulated trading account.

## **Limitation of Liability**

In no event will SMARE Investments LLC or its subsidiaries, affiliates or suppliers be liable for direct, special, incidental, consequential or other damages (including lost profit, lost data, or downtime costs), arising out of the use, inability to use, or the results of use of the software, whether based in warranty, contract, tort or other legal theory, and whether or not advised of the possibility of such damages. Your use of the Software is entirely at your own risk. Should the Software prove defective, you assume the entire cost of all service, repair or correction. The system is provided for educational purposes only, for usage on a simulated trading account.

# Table of Contents

1 Introduction.....	4
2 New NinjaTrader Clients.....	4
3 System Requirements.....	5
3.1 Recommended Versions of NinjaTrader .....	5
3.2 Recommended ES Session Template Hours .....	5
3.3 Recommended Setting of the Main ES Tick Chart – 400 ticks.....	5
4 Setting up the Installation of NinjaTrader.....	6
4.1 Ensure NinjaTrader is setup on your PC and Connect to your Provider.....	6
4.2 Setting up your Instruments.....	9
4.3 A note with regard to data feeds for the ES ##-## contract.....	9
5 Provide EminiJunkie with your NinjaTrader Machine ID-User Defined ID.....	10
5.1 Some Notes on NinjaTrader's usage of Machine ID / User Defined ID.....	11
6 Copying Across or Upgrading the EminiJunkie KIS Files.....	12
6.1 Determine if this is your first-time Installation or an Upgrade.....	12
6.2 Location of My Documents folder.....	12
6.3 Delete any previous EminiJunkie Assembly zip file exports – only if you have a previous version of the EminiJunkie KIS system installed on NinjaTrader.....	13
6.4 Copy across the EminiJunkie KIS system files.....	13
7 Importing the EminiJunkie KIS system into NinjaTrader.....	14
7.1 Remove NinjaScript Assembly – only if you have a previous version of the EminiJunkie KIS system installed on NinjaTrader.....	14
7.2 Import the EminiJunkie KIS NinjaScript files.....	14
7.3 Open the EminiJunkieKIS workspace.....	15
8 System Features.....	16
8.1 Main ES Tick Chart.....	17
8.2 Configuring the KIS parameters.....	19
8.3 EminiJunkie BIAS and CHOP Display Modes.....	22
8.4 EminiJunkie Bands.....	23
9 Market Indexes.....	24
10 Hints and Tips.....	25
10.1 Finding out more about NinjaTrader.....	25
10.2 Shutting down NinjaTrader.....	25
10.3 Enabling the Toolbar and Scrollbars on the main ES Chart.....	25
10.4 Scrolling the Chart.....	25
10.5 Charts show up blank or don't update.....	25
10.6 Periodically, the Workspace Loads but a certain chart appears to have incorrect template settings.....	26
10.7 EminiJunkieBIAS and CHOP ribbon are slightly jagged.....	26
10.8 Re-Ordering the Z-Order of the Indicators on the Main Chart.....	27
10.9 Main ES Chart - set PlotExecutions to DoNotPlot.....	27
10.10 NinjaTrader experiences issues behind a Firewall.....	27
10.11 NinjaTrader changes Machine ID / User Defined ID.....	28
10.12 New CME Globex Trading Day Hours.....	28
11 Contract Rollover.....	30
12 Upgrading NinjaTrader.....	30
13 Appendix A: Alternative Pivots Indicator (ES 5min chart).....	31

# **1 Introduction**

The EminiJunkie KIS system is designed for use as a NinjaScript Indicator (an Assembly written in C#) on the NinjaTrader charting platform. An outline of the installation steps required is presented here, with reference to specific setup instructions that are provided by the various system and data vendors (e.g. NinjaTrader, ApexFutures, CQG). Other information on the system features and hints and tips are also provided.

## **2 New NinjaTrader Clients**

If you are a new NinjaTrader client, please use the following links which are affiliated with EminiJunkie, which enable you to set up an account with Apex Futures (using CQG) using NinjaTrader:

- For a new NinjaTrader account, please use the following link, which is affiliated with EminiJunkie and currently facilitates reduced fees:

<http://apexfutures.com/trading-platforms/ninjatrade/?ref=CREJ>

### 3 System Requirements

The following are required to utilize the EminiJunkie KIS system:

- Windows PC, with suitable memory and specification for running a charting platform such as NinjaTrader
- A trading account with your broker – setup with NinjaTrader, so as to receive the data feed for the ES Emini futures contract – for example we recommend ApexFutures using NinjaTrader with the CQG feed.
- NinjaTrader 32bit running on your PC – on Windows7 this system has been tested on the NinjaTrader32 bit version. The 32bit version runs by default on other versions of Windows such as Vista and XP.
- If you have a Windows 64bit Operating System, then please note that the system has been tested and operates normally on the NinjaTrader32 bit version running on Win7 64bit.
- The EminiJunkie KIS files on your PC as described later in this manual
- The EminiJunkie KIS system is protected and you must provide EminiJunkie with your machine ID so that your machine can be licensed to use it – described later in this manual

#### 3.1 Recommended Versions of NinjaTrader

The EminiJunkie KIS system has been tested and will run on the following version of NinjaTrader, and users are required to use same:

- NinjaTrader 7.0.1000.15

Please note you can get the version of your NinjaTrader by going to **Help** → **About**. The system will usually run on versions above the stated version above also.

#### 3.2 Recommended ES Session Template Hours

The trading hours for the ES changed on November 18, 2012 – please ensure you have the correct session template setup – please see section 10.12 of this guide.

#### 3.3 Recommended Setting of the Main ES Tick Chart – 400 ticks

The EminiJunkie KIS system data feed has been tested and correlated with ThinkOrSwim charts, with the above NinjaTrader version, and the following tick setting is required for the main ES Tick Chart:

- 400 ticks [CQG feed]

## 4 Setting up the Installation of NinjaTrader

To setup the EminiJunkie KIS system, please carry out the following steps.

### 4.1 Ensure NinjaTrader is setup on your PC and Connect to your Provider

- The NinjaTrader platform can be obtained by requesting this from your broker, and can also be downloaded from the following location:

<http://apexfutures.com/trading-platforms/ninjatrade/?ref=CREJ>

- Please ensure you only use the version of NinjaTrader as recommended in section 3 of this Guide
- Please install NinjaTrader on your PC, using the default installation folders. Please note NinjaTrader's recommendations on firewalls if you are using one:

<http://www.ninjatrade.com/installation-guide>

- From the **Control Center** please setup your **Tools** → **Account Connections...** appropriately so that you receive a feed for the ES futures contract (e.g. **ES 06-12**, **ES 09-12** and so forth). For example, with Apex Futures you will have been given instructions as to how to setup your account connection to **CQG** as the **Provider**.
- During your setup of **Account Connections...**, please ensure that:
  - **Connect on Startup** is checked
  - **Historical Data** is Enabled
  - **Include Index data** is checked
  - Please note that some of the above may not be available with all brokers / providers
- An example of the relevant connection properties using ApexFutures [which uses the CQG feed] is shown below.

**Connection Options**

**General**  
Enter your general account connection information.

Connection name: Apex

Provider: CQG

Backup datafeed connection: <None>

Connect on startup: ☒

Historical Data

☒ Enabled

☐ Disabled, I will use another connection for historical data

< Back Next > Cancel

**Connection Options**

**CQG**  
Enter your CQG account information.

User Name: [REDACTED]

Password: [REDACTED]

☒ Demo mode

☒ Include index data

☐ Local OCO simulation

< Back Next > Cancel



- Please ensure that you have logged into the platform at least once so as to check that NinjaTrader is setup properly and you can connect with the feed and receive the ES contract. In addition to the help that comes with NinjaTrader, online help and other tutorials for NinjaTrader are available at:

<http://www.ninjatrader.com/support/helpGuides/nt7/>

- Please note if you are having firewall issues with NinjaTrader, you can log these issues with NinjaTrader themselves on their support forum:

<http://www.ninjatrader.com/support/forum/index.php>

## 4.2 Setting up your Instruments

With NinjaTrader it is recommended to setup your Instruments such that the ES contract is available on your default list of instruments – this makes it quicker for you to setup charts correctly.

- From the **Control Center**, goto **Tools** → **Instrument Manager...**
- From the **Available Master Instruments** panel choose type of **Future** and click on **Search**
- From the results grid below, scroll down and choose the **ES** contract from the **Globex Exchange** with the relevant **Expiry** for example:
  - **ES ##-## - please ensure you add this contract**
  - **ES 06-13,**
  - **ES 09-13,**
  - **ES 12-13,**
  - **ES 03-14**
  - and so on - please note these are the relevant naming conventions for the CQG Provider
- Click on the left arrow triangle ◀ so as to add this to your default list.

Please note depending on your broker, you may have access to NYSE market index data as well as the ES feed. If you have such access, please carry out the following steps:

- From the **Available Master Instruments** panel choose type of **Index** and click on **Search**
- Add the following symbols to your default list :
  - ^TICK
  - ^ADV
  - ^DECL
  - ^DVOL
  - ^UVOL
  - Please note these are the relevant naming conventions for the CQG Provider

## 4.3 A note with regard to data feeds for the ES ##-## contract

The ES charts may be configured to run with the continuous ES ## - ## contract. However, some data providers may not provide a data feed for this contract (e.g. CQG). In this case, please configure all the ES charts to use the relevant ES contract for the time period in which you are trading (e.g. ES 12-13, ES 03-13, and so forth).

Please see section 11 of this guide for further details of how to configure a charts data series.

## 5 Provide EminiJunkie with your NinjaTrader Machine ID-User Defined ID

The EminiJunkie KIS system is a licensed system and is copy protected using a variety of mechanisms. An important step in the correct operation of the EminiJunkie KIS system is providing EminiJunkie with your machine ID so that it can be licensed to use the KIS system:

- From the **Control Center**, please goto **Help** → **3<sup>rd</sup> Party Licensing...**
- In the **Vendor Name** section, please enter **EminiJunkie** (note the capitalizations and no spaces)
- In the **User Defined ID**, please enter a user id of your choosing, e.g. **JohnDoePC1** – we suggest not having any spaces in your id
- Click on the Submit button
- In the panel below a long series of characters will be displayed followed by a hyphen and then your chosen User Defined ID – for example it could be something like:

290AF5A7CB9F72C97ED18F4A632AAB5-JohnDoePC1

- Copy this entire string into an email, and email this to EminiJunkie so that your machine can be authorized to use the EminiJunkie KIS system. EminiJunkie will send you an email subsequently confirming your machine ID-user defined ID has been added to the approved list.
- Please ensure you shutdown and re-start NinjaTrader after you supply the above ID to EminiJunkie, and prior to when you copy across the EminiJunkie KIS system files as described in the next section.
- Please note that with NinjaTrader licensing, the license is tied to a particular machine, not a user name. So to use the EminiJunkie KIS system on multiple machines you will need to purchase multiple licenses. Or if you move the EminiJunkie KIS system to a different PC you will need to advise EminiJunkie of your new ID, generating the ID again using the steps above.

### **5.1 Some Notes on NinjaTrader's usage of Machine ID / User Defined ID**

In some cases, the Machine ID and/or User Defined ID that is used by NinjaTrader can be changed, which may mean you will need to re-supply your ID to EminiJunkie:

- Please make a note of your Machine ID-User Defined ID. Please do not subsequently alter/blank your User Defined ID for the Vendor Name EminiJunkie – if you do you may be prevented from running the system from the protection software (if this is the case, in NinjaTrader you may receive the message “Unable to Verify Vendor License”).
- Certain hardware changes to your PC can cause the Machine ID to change – if this is the case you will need to supply your new Machine ID-User Defined ID to EminiJunkie so you can continue to use the system.
- Further information can be found on the NinjaTrader support forum at:

<http://www.ninjatrader.com/support/forum/showthread.php?t=41855>

<http://www.ninjatrader.com/support/forum/showthread.php?t=45186>

## 6 Copying Across or Upgrading the EminiJunkie KIS Files

### 6.1 Determine if this is your first-time Installation or an Upgrade

If this is the first time you have installed the system then please carry out the following steps detailed further in this guide:

- Having informed EminiJunkie of your MachineID per the previous Section 5 of the guide, refer to the following steps
  - 6.2, 6.4
  - 7.2, 7.3

If you are upgrading the system with a new build supplied by EminiJunkie, then please carry out the following:

- 6.2, 6.3, 6.4
- 7.1, 7.2, 7.3

### 6.2 Location of My Documents folder

An important aspect of how NinjaTrader works is that it stores a number of important files such as Workspaces, templates and so on in your **My Documents** folder on your PC. This is typically in the location:

**C:\Users\<username>\My Documents** (or simply **Documents**)

where <username> represents the name of the users currently logged in. It can also differ slightly between the various versions of Windows 7 / Vista / XP.

Please locate your **My Documents** folder, and then verify that NinjaTrader, as part of its default setup, has placed a folder in My Documents which is entitled:

**\ NinjaTrader 7**

If this folder does not exist, please uninstall / reinstall NinjaTrader so that you use the default installation, which should by default place this folder in the **My Documents** folder.

It may be helpful to create a shortcut on your desktop to your **My Documents** folder as a number of the locations referred to below will require you to copy files to various sub-folders within this folder.

Please ensure NinjaTrader is shutdown prior to carrying out the remaining steps specified below.

### 6.3 Delete any previous EminiJunkie Assembly zip file exports – only if you have a previous version of the EminiJunkie KIS system installed on NinjaTrader

- If this is your first installation of the EminiJunkie KIS system, you can skip this step
- Please delete any previous EminiJunkie files from the following locations

My Documents Folder location
<p>&lt;user&gt;\My Documents\NinjaTrader 7\bin\Custom\ExportNinjaScript</p> <ul style="list-style-type: none"> <li>• Remove any <u>EminiJunkie*.zip</u> files from this directory</li> </ul>

### 6.4 Copy across the EminiJunkie KIS system files

The EminiJunkie KIS system uses a number of files that you will have been provided access to. Initially, place/unzip these files in a location on your PC of your choosing [e.g. a temporary directory such as c:\data\eminijunkie or similar].

Please copy across the files in your temporary unzipped location to your My Documents folder, per the table below:

Temp Unzipped location	My Documents Folder location
<p>&lt;temp folder&gt;\My Documents\NinjaTrader 7\bin\Custom\ExportNinjaScript</p> <p><b>EminiJunkieKIS.zip</b></p>	<p>Copy all these file(s) to:</p> <p>&lt;user&gt;\My Documents\NinjaTrader 7\bin\Custom\ExportNinjaScript</p>
<p>&lt;temp folder&gt;\My Documents\NinjaTrader 7\templates\Chart</p> <p><b>ADV_DEC 1min.xml</b>  <b>ES 1sec.xml</b>  <b>ES 5min.xml</b>  <b>ES 400tick.xml</b>  <b>ES 3200tick.xml</b>  <b>TICK 1min.xml</b>  <b>UVOL_DVOL 1min.xml</b></p>	<p>Copy all these file(s) to:</p> <p>&lt;user&gt;\My Documents\NinjaTrader 7\templates\Chart</p>
<p>&lt;temp folder&gt;\My Documents\NinjaTrader 7\templates\ChartObject</p> <p><b>FibonacciRetracements.xml</b></p>	<p>Copy all these file(s) to:</p> <p>&lt;user&gt;\My Documents\NinjaTrader 7\templates\ChartObjects</p>
<p>&lt;temp folder&gt;\My Documents\NinjaTrader 7\workspaces</p> <p><b>EminiJunkieKIS.xml</b></p>	<p>Copy all these file(s) to:</p> <p>&lt;user&gt;\My Documents\NinjaTrader 7\workspaces</p>

## 7 Importing the EminiJunkie KIS system into NinjaTrader

After copying across the relevant files to your PC, you have only a brief number of steps to carry out to get the system installed into your NinjaTrader platform.

### 7.1 Remove NinjaScript Assembly – only if you have a previous version of the EminiJunkie KIS system installed on NinjaTrader

- If this is your first installation of the EminiJunkie KIS system, you can skip this step
- If you currently have the **EminiJunkieKIS** workspace open, please close this workspace by going to the **Control Center**, then goto **File** → **Workspaces** → **EminiJunkieKIS** to ensure it is the current workspace and then goto **File** → **Workspaces** → **Close Workspace**
- Please note you should not close down a workspace by clicking the X in the top right of each chart. If you do this (and save changes), you will lose all the charts from your workspace. If you lose any charts from your workspace, you will need to repeat the Copying procedure outlined in the previous section to get your charts back.
- From the **Control Center**, goto **File** → **Utilities** → **Remove NinjaScript Assembly...**
- Please remove all the relevant EminiJunkie **Assemblies** from **NinjaTrader**, this will be the assembly **EminiJunkieKIS**
- Shutdown and restart **NinjaTrader** at this point

### 7.2 Import the EminiJunkie KIS NinjaScript files

- From the **Control Center**, goto **File** → **Utilities** → **Import NinjaScript...**
- Navigate to the folder  
**<user>\My Documents\NinjaTrader 7\bin\Custom\ExportNinjaScript**
- Now import the following file you copied here earlier per the preceding chapter of this guide:
  - **EminiJunkieKIS.zip**
- The assemblies are now imported into NinjaTrader and provided you have been licensed appropriately as described earlier in this guide, are now available for use as indicators in the **EminiJunkieKIS** workspace
- Again, shutdown and restart **NinjaTrader** at this point – **it is important you shutdown and restart NinjaTrader here so that it correctly recognizes its indicators**

### 7.3 Open the *EminiJunkieKIS* workspace

- Please ensure you have already shutdown and restarted NinjaTrader after importing the *EminiJunkie* assemblies
- Ensure you are connected to a valid data feed, from the **Control Center**, goto **File** → **Connect** → **[feed that you have already configured per section 4 of this guide]**
- From the **Control Center**, goto **File** → **Workspaces** → **Open Workspace...**
- Open the ***EminiJunkieKIS*** workspace

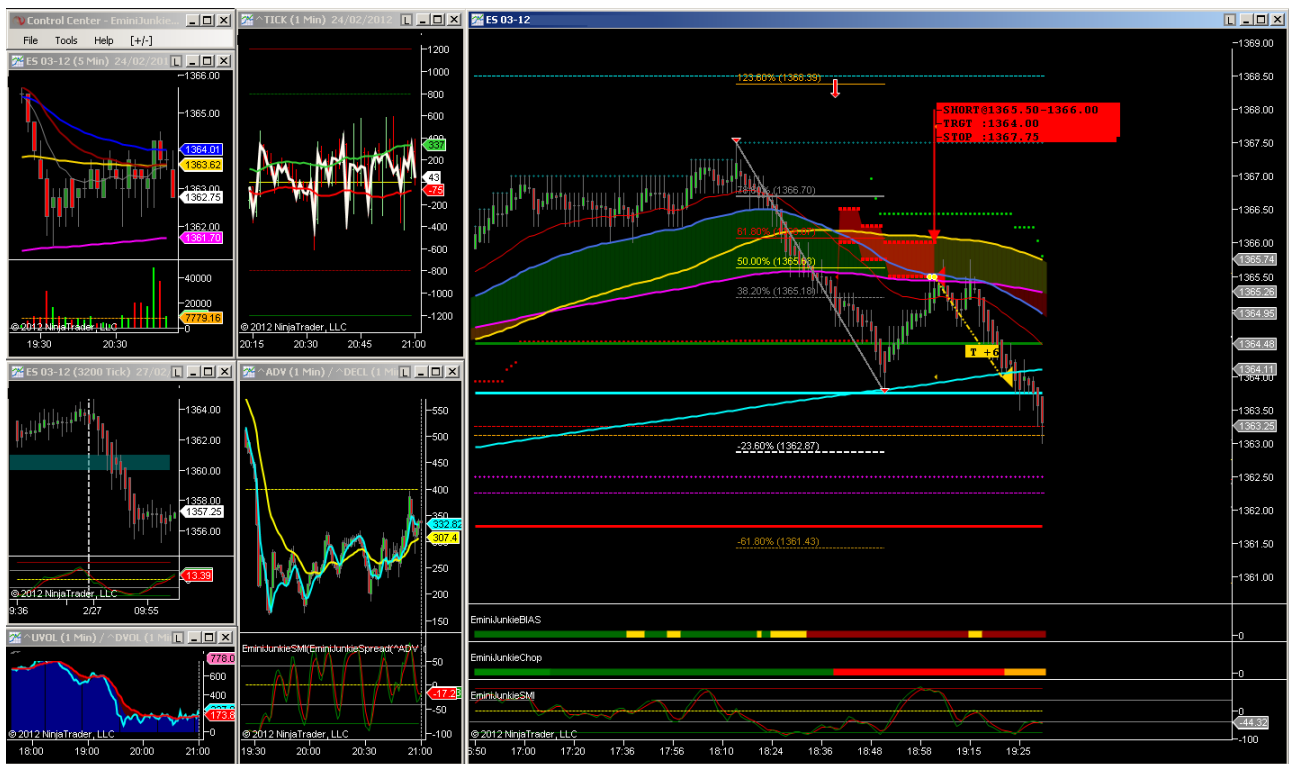
## 8 System Features

The EminiJunkieKIS system runs in a NinjaTrader workspace, consisting of a number of charts:

- The Main Tick chart of the ES contract
- 5 minute chart of the ES contract
- 3200 tick chart of the ES
- 1sec chart of the ES – this is hidden from view behind the main chart, as it is for system use only

If you have a valid data feed for the NYSE internals of \$TICK, \$ADV/DEC and \$UVOL/\$DVOL the following charts will also have data displayed in them:

- 1min chart of the ^TICK (\$TICK on the NYSE exchange)
- 1min chart of the ^ADV/^DECL (NYSE advance / decline)
- 1min chart of the ^UVOL/^DVOL (NYSE advance volume less decline volume)
- if you do not have a valid data feed for the above internals, these charts may show up blank



## **8.1 Main ES Tick Chart**

The main chart is a tick chart of the ES contract, shown on the right hand side of the screen. The key characteristics of this chart are:

- It has a Heiken-Ashi study applied
- It has the EminiJunkie KIS system applied as an indicator for the chart, as well as other EminiJunkie indicators

The output from the EminiJunkie KIS system is shown on the chart, including:

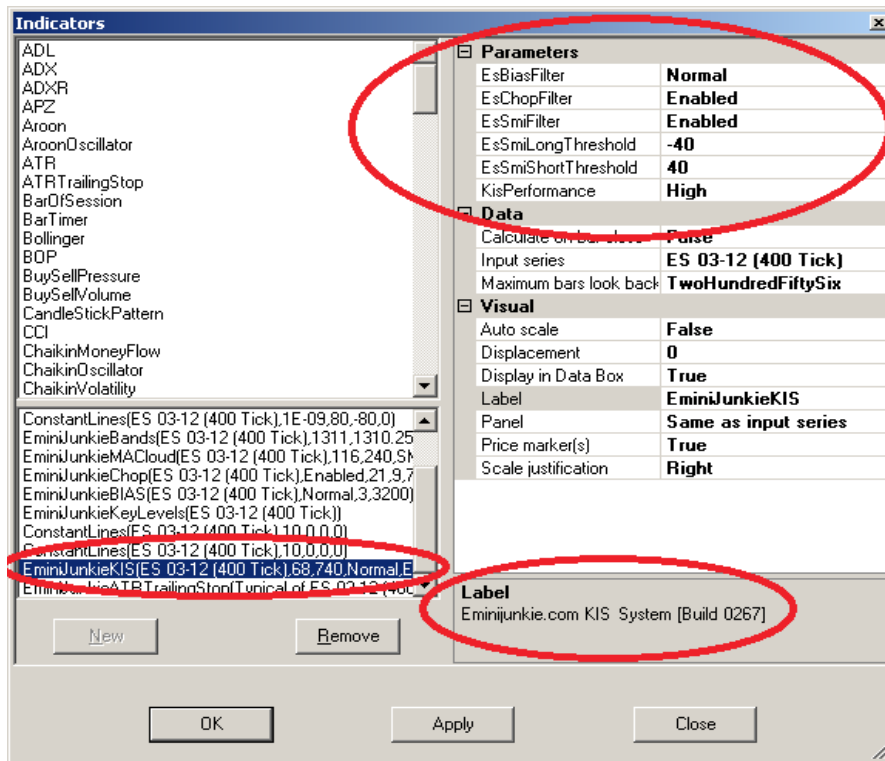
- Various Moving Averages are displayed and updated
- Various Key Levels, such as High of Day, Low of Day, Close and so forth are shown
- EminiJunkie Bands, the levels of which are supplied each day in the EminiJunkie trading room, which can be configured by the user
- Crosses of our moving averages, indicated by a green up / red down arrow
- A sound is played after a cross occurs
- Fibs are automatically drawn, with certain retracement levels
- The entry envelope is drawn and where appropriate, this is shaded
- Valid entries, which have met our parameters for our filter threshold criteria (in green [for buy long] or red [for sell short])
- Invalid entries are shown that did not meet the filter threshold criteria as specified, or other criteria (i.e. if the 38% retracement is behind the gold line at entry, there has been a cross back against the cross being drawn, or insufficient profit was available at entry – the minimum profit target is 3 ticks)
- The outcome of the trade
- In the lower panels the EminiJunkie BIAS and CHOP studies are displayed, as well as the SMI for the ES tick chart.



## 8.2 Configuring the KIS parameters

The EminiJunkie KIS system is an indicator on the main ES chart, and has a number of configurable parameters to allow you to filter various potential entries to your own criteria.

To view these parameters, first bring up the indicators dialog box - right-click any where on the main ES chart, and choose **Indicators...**



- The KIS indicator is located amongst the other indicators in the lower left panel – highlight this by clicking on the EminiJunkieKIS indicator
- Note that the build version for the EminiJunkieKIS is displayed in the lower right panel
- The configurable parameters are located in the upper right panel, under the **Parameters** heading. These include:
  - **EsBIASFilter** – this various modes including **Normal**, **Aggressive**, **Simple** and **Disabled**.
    - When **Disabled**, no filtering of the entry is done with regard to the EminiJunkie BIAS indicator (displayed in a lower panel).
    - In **Normal** mode, entries are checked against the BIAS state at the bar of entry, so for longs, if the BIAS is Dark Green then this is OK; however if for a long the BIAS is any other color then a warning text is displayed with the entry. Similarly for shorts, if the BIAS is Dark

Red then this is OK – however any other color results in a warning text with the entry.

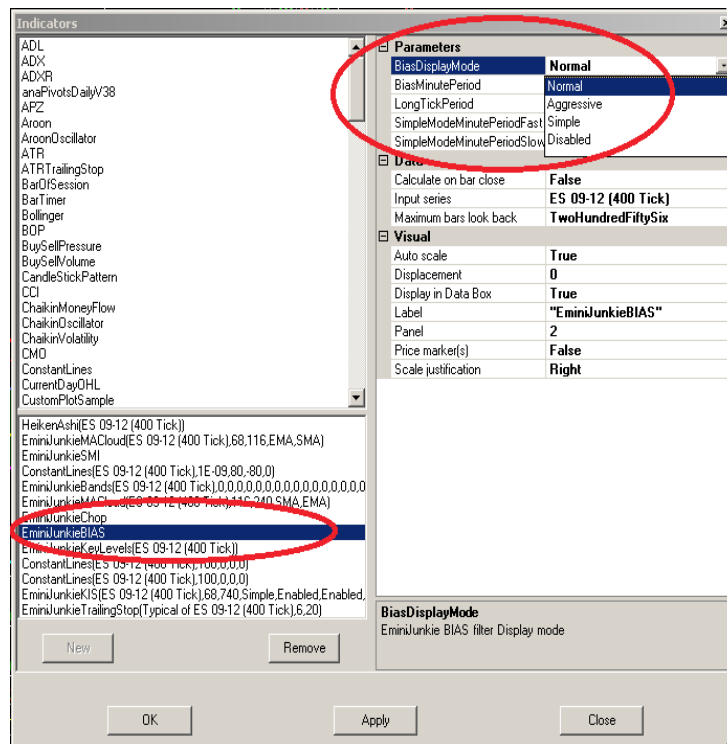
- In **Aggressive** and **Simple** mode, again entries are checked and for longs, if the BIAS is Dark or Light Green, then this is OK. For shorts, if the BIAS is Dark or Light Red, then this is OK.
- **EsChopFilter** – this can be **Enabled** or **Disabled**.
  - When Enabled, for longs, if the EminiJunkie CHOP indicator is Dark Green this is OK. Similarly for shorts, when the CHOP is Dark Red, this is OK.
- **EsSMIFilter** – when Enabled, this allows the user to filter the entries according to the thresholds they specify in the parameters below:
  - **SMI Long Threshold**: for longs, if the SMI at the entry is below the user-specified value, then the entry is OK; otherwise a warning text will be displayed with the entry.
  - **SMI Short Threshold**: for shorts, if the SMI at the entry is above the user-specified value, then the entry is OK; otherwise a warning text will be displayed with the entry.
- **KisDisplay** – this has the modes **Normal**, **UltraSimple**, and **NoZones**:
  - The **Normal** setting draws all features on the chart, including all the moving averages, fibs, their anchors, arrows at the crosses, trades and some other information. The **UltraSimple** draws just the gold moving average, and any trades. **NoZones** draws just a text box.
- **KisOppositeSignal** – this had two modes: **ScratchTrade**, and **NoScratch**:
  - This parameter enables the user to set whether trades should attempt to be scratched where a subsequent opposite signal occurs. Where ScratchTrade is selected, if there is a trade in progress, and a subsequent opposite signal is detected, the target of the original trade is revised down to the rounded 38% fib level of the opposing subsequent signal, in an attempt to scratch out of the trade. If the 38% is not hit, then the original trade may end up taking a full stopout.
- **KisPerformance** – this had three modes: **High**, **Medium** and **Low**:
  - The performance of the system is influenced by the number of valid fib retracement objects drawn on the chart, so with a High setting, a very small number of fibs are drawn – which is suitable for “real time” usage of the charts. With a Low setting, a larger number of fibs are drawn, which can be useful when reviewing the charts of the recent day(s).

- ***OnlyShowSignalsInDirnBias*** – this had two modes: ***Enabled***, and ***Disabled***:
  - When Enabled this setting will only show a signal as valid and with its associated entry/target/stop levels if the signal is in the direction of the BIAS; otherwise the entry text is grayed out and no entry levels shown.
- ***OnlyShowSignalsInTimeWindow*** – this had two modes: ***Enabled***, and ***Disabled***:
  - When Enabled this setting will only show a signal as valid and with its associated entry/target/stop levels if the timestamp of the entry lies between the times stated in the subsequent parameters ***TimeWindowBeginEST*** and ***TimeWindowEndEST***. All times are entered in EST, the default window being 830 to 1130.

### 8.3 EminiJunkie BIAS and CHOP Display Modes

In the lower panels of the main ES Tick chart, the indicators for the EminiJunkie BIAS and CHOP are shown. Using their respective indicator parameter settings, you can change how these are displayed. The CHOP indicator can be **Enabled / Disabled** for display purposes, while the BIAS can be displayed in various modes including **Normal**, **Aggressive**, **Simple** and **Disabled**.

First, bring up the indicators dialog box - right-click any where on the main ES chart, and choose **Indicators...**



For the BIAS indicator, you can choose the display mode to be **Normal**, **Aggressive** or **Simple**:

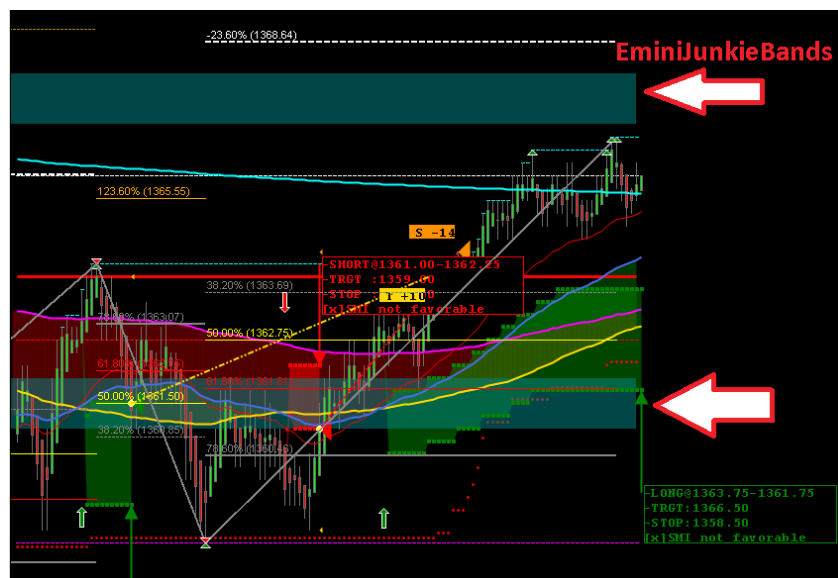
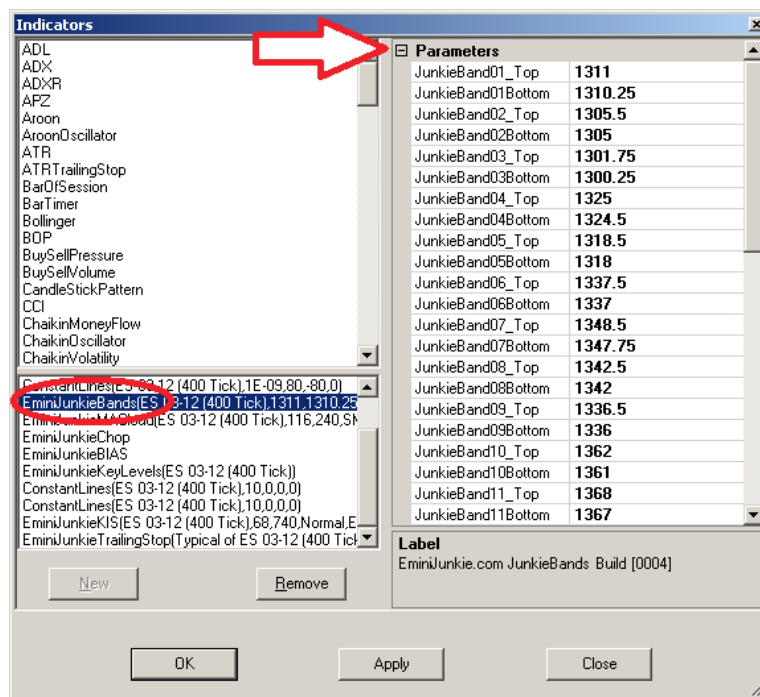
- In **Normal** mode, three colors are shown, being Dark Green [BIAS is favorable for longs], Dark Red [BIAS is favorable for shorts] and Yellow [neutral BIAS].
- In **Aggressive** and **Simple** mode, an additional two colors are shown, being Light Green [BIAS is favorable for aggressive longs] and Light Red [BIAS is favorable for aggressive shorts].

Please note that it is suggested that for visual consistency, if you decide to enable the KIS Parameter for the BIAS **Filter** such that it is **Aggressive**, you should similarly set the BIAS Parameter **BiasDisplayMode** to **Aggressive**. Similarly if you decide to enable the KIS Parameter for the BIAS **Filter** such that it is **Simple**, you should set the BIAS Parameter **BiasDisplayMode** to **Simple**.

## 8.4 EminiJunkie Bands

EminiJunkie Bands are available on both the main ES tick chart, and also the ES 3200 tick chart. To set their various levels:

- Right-click anywhere on the relevant chart, and choose **Indicators...**
- From the Indicator list, locate **EminiJunkieBands**, and click on this
- You can set the upper and lower value for the relevant band in the Parameters section of the dialog box



## 9 Market Indexes

The EminiJunkie KIS workspace includes charts that display the market indexes (sometimes referred to as “internals”) including ^TICK, ^ADV/^DECL and ^UVOL/^DVOL.

To view these indexes, your broker / data provider must provide these to you. Please note that not all brokers provide these indexes, and in some cases, where you have a demo account, whilst the broker provides historical data for these indexes, they do not stream.

Thus, there are the following possible scenarios on your charts with regard to the Market Indexes:

- ***Your broker / data provider provides streaming market indexes:*** in this case, your market internals should update and display like any normal chart. An example would be a funded live account with Apex Futures using CQG.
- ***You have a demo account with a broker, who provides historical data of the market indexes, but they do not stream:*** an example of this would be a demo account with Apex Futures using CQG. Here, when you first load up the workspace, the market indexes show up, but they do not subsequently update.
  - Tip: you can periodically [e.g. every few minutes] **right click** on the given market index chart [e.g. the ^TICK or the ^ADV/^DECL] and then click on **Reload All Historical Data** – this may bring your chart up to date with more recent data.
- ***Your broker does not provide streaming data of the market indexes:*** in this case, your market index charts may show up blank.
  - Tip: you can subscribe to an additional data feed such as **Kinetick** to receive streaming market index data. There will typically be a charge associated from the data provider.

## 10 Hints and Tips

### 10.1 *Finding out more about NinjaTrader*

Comprehensive documentation on NinjaTrader and how to use it is provided at <http://www.ninjatrader.com/support/helpGuides/nt7/>

In addition, full support is provided for NinjaTrader at: <http://www.ninjatrader.com/support/forum/index.php>

If you have any questions or queries on NinjaTrader itself, in the first instance please consult the resources above. The support provided on the forum in particular is very good, and timely and courteous responses are given.

### 10.2 *Shutting down NinjaTrader*

Please note you should not close down NinjaTrader or its workspace by clicking the **X** in the top right of each chart. If you do this (and save changes), you will lose all the charts from your workspace. The correct way to shutdown NinjaTrader is to goto **Control Center** → **File** → **Exit** or simply click the **X** in the top right of Control Center. If you lose any charts from your workspace, you will need to repeat the copying procedure in Section 6 to re-install the files and to get your charts back.

### 10.3 *Enabling the Toolbar and Scrollbars on the main ES Chart*

In the EminiJunkieKIS workspace, so as to use screen area more efficiently, the toolbars and scrollbars are turned off. If you wish to enable these, then for the relevant chart, right-click on the chart and choose **Properties...** - towards the bottom of the dialog you will see settings that allow you to turn on the toolbar and scrollbar – **Show scrollbar** and **Show toolbar**.

The toolbar allows you to access to various tools including chart drawings. The scrollbar displays a horizontal tool bar that lets you scroll the chart.

### 10.4 *Scrolling the Chart*

If you wish to see previous setups / bars on the main ES tick chart, you can do the following:

- Left-click and drag the chart with your mouse (try not to click on a drawing object or an indicator)
- Use the PAGE UP and PAGE DOWN keys on your keyboard (make sure the chart is in focus first by left-clicking anywhere on the chart)
- If you have turned on the scrollbar you can use this to scroll the chart also

### 10.5 *Charts show up blank or don't update*

Areas to check further into here include:

- Check that your user account is still valid with your broker – this is particularly the case where you have a demo account which may expire after a certain period.
- Check the NinjaTrader log (**Control Center** → **[+/-]** → **Log** tab) to see if there are any error messages there – for example you might see username/password expired or invalid.
- If your market index charts are blank (i.e. the ^TICK, ^ADV/^DECL, ^UVOL/^DVOL) check that you have enabled index data in your Account Connection. Please review fully the information and screengrabs in this guide in the sections that deal with **Setting up the Installation of NinjaTrader** and also the chapter on **Market Indexes**.

### **10.6 Periodically, the Worskpace Loads but a certain chart appears to have incorrect template settings**

Sometimes the EminiJunkieKIS workspace can load but some of the charts look incorrect. This can happen in particular with some of the market index charts (e.g. the ^ADV/^DECL and the ^UVOL/^DVOL chart) – in this case please try the following.

- Reload the chart template for the ES400 tick chart (right click on the chart, **Templates** → **Load...** → choose **ES400 tick** from the drop down, then click OK
- Close the EminiJunkieKIS workspace, and reload the EminiJunkieKIS workspace again, from the original zipped file package supplied by EminiJunkie (i.e. copy over the workspace as described in section 6 of this guide before you open the workspace in NinjaTrader)

### **10.7 EminiJunkieBIAS and CHOP ribbon are slightly jagged**

Depending on your screen resolution and size, and also if you have re-sized or maximized the main ES tick chart, the BIAS and CHOP ribbon indicators may appear slightly jagged – if this is the case, try the following:

- Reload the chart template for the ES400 tick chart (right click on the chart, **Templates** → **Load...** → choose **ES400 tick** from the drop down, then click OK
- Close the EminiJunkieKIS workspace, and reload the EminiJunkieKIS workspace again, from the original zipped file package supplied by EminiJunkie (i.e. copy over the workspace as described in section 6 of this guide before you open the workspace in NinjaTrader)
- slide the right hand access of the ribbon panel (left-click and drag the right hand axis); then hold down CTRL and drag the right hand axis so as to move the ribbon back to the middle of its panel).

## 10.8 Re-Ordering the Z-Order of the Indicators on the Main Chart

The EminiJunkieKIS workspace has a number of indicators displayed upon it to help you effectively use the system. As a default, the workspace is setup initially in the zipped setup files such that the HeikenAshi price candles should be displayed as the top-most layer. You can change this if you wish (or any layer for that matter) using the following standard NinjaTrader functionality:

- Select the HA price indicator (or the indicator whose Z-order to wish to alter): do this by left-clicking with your mouse on any HA candle [it might take you a try or two to get this, but you'll know you have it when you see a whole load of white squares appearing on your chart overlaying the HA candles]
- Now hold down the SHIFT key on your keyboard, and scroll the mouse wheel - you'll see a little item of text on your chart saying "Level 1 of 8" or similar, just keep scrolling your mouse until you get the HA price up to the topmost layer - level 1 of 8

## 10.9 Main ES Chart - set *PlotExecutions* to *DoNotPlot*

The EminiJunkieKIS workspace has been cleaned up of unnecessary clutter as far as possible to ensure you can focus on the KIS signals themselves. With this in mind, on the main tick chart, the following setting is in place (this may be relevant if you trade through the charts):

- Right click on the main ES tick chart → **Data Series...**
- Under the **Trades** section in the right panel, **PlotExecutions** is set to **DoNotPlot**

## 10.10 NinjaTrader experiences issues behind a Firewall

If you are having issues connecting NinjaTrader behind a firewall (e.g. you may get the message "Failed to verify license") please note the following:

- the addresses that NinjaTrader typically accesses include the below, and ports 80 (http) and 443 (https) may be utilised:  
[www.ninjatrader.com](http://www.ninjatrader.com)  
[www.ninjatrader-support2.com](http://www.ninjatrader-support2.com)
- check the date and time on your PC is correct, including the year
- check that Internet Explorer (and your other browsers) can access the internet
- the connection to your data feed may use other ports and other addresses – please use the NinjaTrader support forum for further information  
<http://www.ninjatrader.com/support/forum/index.php>
- you may find the following thread helpful on the support forum:  
<http://www.ninjatrader.com/support/forum/showthread.php?t=37837>

## 10.11 NinjaTrader changes Machine ID / User Defined ID

In some cases, the Machine ID and/or User Defined ID that is used by NinjaTrader can be changed, which may mean you will need to re-supply your ID to EminiJunkie:

- Please make a note of your Machine ID-User Defined ID. Please do not subsequently alter/blank your User Defined ID for the Vendor Name EminiJunkie – if you do you may be prevented from running the system from the protection software (if this is the case, in NinjaTrader you may receive the message “Unable to Verify Vendor License”).
- Certain hardware changes to your PC can cause the Machine ID to change – if this is the case you will need to supply your new Machine ID-User Defined ID to EminiJunkie so you can continue to use the system.
- Further information can be found on the NinjaTrader support forum at:

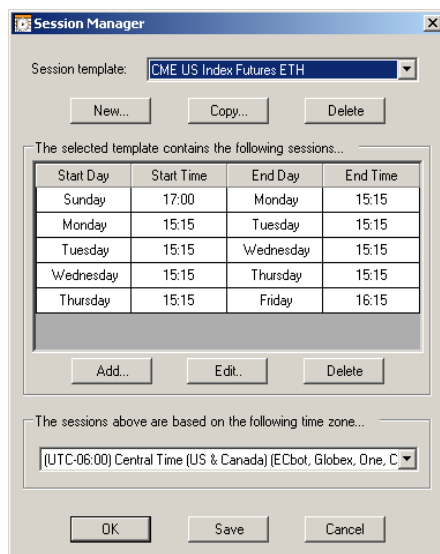
<http://www.ninjatrader.com/support/forum/showthread.php?t=41855>

<http://www.ninjatrader.com/support/forum/showthread.php?t=45186>

## 10.12 New CME Globex Trading Day Hours

From November 18, 2012 the CME Globex trading day revised their trading hours for equity index products (in particular the ES). You will need to check and/or update NinjaTrader installation to these new trading hours. This is particularly relevant for NinjaTrader release 7.0.1000.11.

Goto **Control Center** → **Tools** → **Session Manager...** and choose the session template **CME US Index Futures ETH**. Change this session template to the new hours shown below (you may wish to take a copy before changing the template):



Note that the session time definitions in NinjaTrader are based on the Central Time zone, not the EST.

The main thing to note with the new session times is that most end times are still 1615EST for Monday to Thursday, with the exception being Friday where there is some extra trading until 1715EST.

After saving the session template, please shut down and re-start NinjaTrader.

## 11 Contract Rollover

On or soon after contract rollover day, you will need to update NinjaTraders instruments to point at the new ES contract symbol. You will need to do this 4 times a year.

Please note you do not typically need to rollover the contract if the charts are set to the continuous contract ES ~~###~~

Details of how to rollover a futures contract are available at:

[http://www.ninjatrader.com/support/helpGuides/nt7/index.html?rolling\\_over\\_a\\_futures\\_contract.htm](http://www.ninjatrader.com/support/helpGuides/nt7/index.html?rolling_over_a_futures_contract.htm)

After you have added the new contract symbol using the Instrument manager (as described in the link above), you can change the primary data series for each of the ES charts (400tick, 3200tick, 5min and 1sec):

- Enable the chart toolbar – so for the given chart right-click on the chart, select **Properties...** and **Show toolbar**
- In the chart's toolbar, you'll see the old ES contract shown at the left hand side (i.e. in the upper left corner of the chart) – click on the old ES contract to show the drop down menu of available instruments, and then choose the new ES contract.
- Repeat this procedure for the 400 tick, 3200tick, 5min and 1sec

An alternative way to change the primary data series for a given chart is to carry out the following steps:

- left-click anywhere in the relevant ES chart
- on your keyboard start typing ES 09-12 – you'll see a text box pop up enabling you to update the primary data series for the chart [note the space in the ES 09-12 contract – you need to type in the space between the “S” and the “0”]

Please note that, if you wish, from the **Control Panel** → **Instrument Manager** you can edit the **ES** contract's **Merge Policy** to **MergeNonBackAdjusted**; then when you load the current symbol it uses previous contracts for historical data.

## 12 Upgrading NinjaTrader

From time to time, NinjaTrader will provide new releases of its platform. EminiJunkie will state to which NinjaTrader release the KIS system has been tested and will run on.

## 13 Appendix A: Alternative Pivots Indicator (ES 5min chart)

Included with the zip files is another 3<sup>rd</sup> party unsupported indicator that may optionally be used on the ES 5min chart.

If you wish to install the unsupported 3<sup>rd</sup> party indicator, you will find a file in the directory where you unzipped the EminiJunkieKIS files (see section 6.4 of this guide) – it will be located in the same directory as this system guide – the file name of the indicator is:

### ***NTDaily5MinPivots.zip***

If you wish to add this indicator to the ES 5min chart (replacing the native Pivots indicator) then please import the indicator as you would normally for any NinjaTrader indicator:

- From the Control Center, choose File → Utilities → Import NinjaScript...
- Navigate to the directory where the indicator is located
- Highlight the indicator ***NTDaily5MinPivots.zip*** and click ***Open*** to import (further information on importing indicators is available at <http://www.ninjatrader.com/support/helpGuides/nt7/import.htm> )

After importing, you will see the indicator listed in your list of available indicators, its name being ***anaPivotsDailyV38*** (or similar). If you wish, you may now add this indicator to the ES 5min chart, replacing the native Pivots indicator:

- Right-click anywhere on the ***ES 5min chart***, and choose ***Indicators...***
- On the list of indicators in the bottom left panel, remove the existing ***Pivots*** indicator
- From the list of indicators in the top left panel, add the ***anaPivotsDailyV38*** indicator (it will subsequently appear on the lower left panel among the list of indicators applied to the chart)
- Set the defaults of the indicator to the following values per the following screengrab

<b>Options</b>	
Pivot Formula	Wide
Session	RTH
Session # for RTH	First
Settlement/Close	DailyBars
Show Midpivots	True
<b>User defined values</b>	
UserDefinedClose	0
UserDefinedHigh	0
UserDefinedLow	0
<b>Data</b>	
Calculate on bar close	True
Input series	ES 06-12 (5 Min)
Maximum bars look back	TwoHundredFiftySix
<b>Visual</b>	
Auto scale	False
Displacement	0
Display in Data Box	False
Label	
Panel	Same as input series
Price marker(s)	True
Scale justification	Right
<b>Plot Colors</b>	
Central Pivot	<input type="checkbox"/> Transparent
Directional Pivot	<input type="checkbox"/> Transparent
Main Pivot	<input type="checkbox"/> Transparent
Midpivots	<input checked="" type="checkbox"/> DarkGray
Prior Close	<input type="checkbox"/> Transparent
Prior High	<input type="checkbox"/> Transparent
Prior Low	<input type="checkbox"/> Transparent
Prior VWAP	<input type="checkbox"/> Transparent
Resistance	<input checked="" type="checkbox"/> 0, 192, 192
Support	<input checked="" type="checkbox"/> 192, 0, 192
<b>Plot Parameters</b>	
Dash Style High, Low, Close	Dot
Dash Style Midpivots	DashDot
Dash Style Pivots	Dot
Label Font Size	7
Label Offset	16
Label Position	Right
Line Width High, Low, Close	2
Line Width Midpivots	1
Line Width Pivot	2
Max. Plot Length # Bars	120
<b>Settlement Next Day For Globex</b>	
Holiday 01 /No Trade Date	1/1/2013
Holiday 02 /No Trade Date	1/21/2013
Holiday 03 /No Trade Date	2/18/2013
Holiday 04 /No Trade Date	5/27/2013
Holiday 05 /No Trade Date	7/4/2013
Holiday 06 /No Trade Date	9/2/2013
Holiday 07 /No Trade Date	11/28/2013
Holiday 08 /No Trade Date	12/25/2013
Holiday 09 /No Trade Date	5/31/2010
Holiday 10 /No Trade Date	7/5/2010
Holiday 11 /No Trade Date	9/6/2010
Holiday 12 /No Trade Date	11/25/2010
Holiday 13 /No Trade Date	1/17/2011
Holiday 14 /No Trade Date	2/21/2011
Holiday 15 /No Trade Date	5/30/2011
Holiday 16 /No Trade Date	7/4/2011
Holiday 17 /No Trade Date	9/5/2011
Holiday 18 /No Trade Date	11/24/2011
Holiday 19 /No Trade Date	1/16/2012
Holiday 20 /No Trade Date	2/20/2012
Holiday 21 /No Trade Date	5/28/2012
Holiday 22 /No Trade Date	7/4/2012
Holiday 23 /No Trade Date	9/3/2012
Holiday 24 /No Trade Date	11/22/2012
<b>Label</b>	
Daily Session Pivots.	

- Please note you will need to change the values of the various **Holiday01/02/03/etc/NoTradeDate** in future years

- After you have set the above, click **OK** on the Indicators dialog screen to save your settings
- Remember to save your workspace so that you retain your settings between sessions of NinjaTrader

You may need to change slightly the Data Series properties to get the above indicator to show properly – if this is the case then try the following steps:

- Right click on the ES5min chart
- Choose **Data Series...**
- Under **Data** change **DaysToLoad** to **7** or a higher value
- click **OK** – you may need to experiment with other values for **DaysToLoad**

Please note that the **anaPivotsDailyV38** indicator is a 3<sup>rd</sup> party indicator, and is not supported by neither EminiJunkie nor NinjaTrader; (the default Pivots indicator that is shipped with the EminiJunkieKIS workspace is a native NinjaTrader indicator and therefore supported by NinjaTrader themselves). If you have any issues with this 3<sup>rd</sup> party indicator, then please remove it and revert to the default EminiJunkieKIS workspace as shipped, which utilizes the native NinjaTrader Pivots indicator.